

Brief Constructed Response

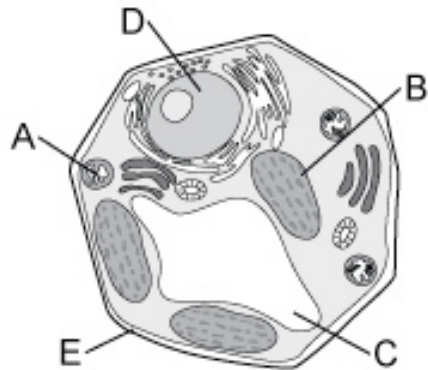
Structure of Life

Part 1

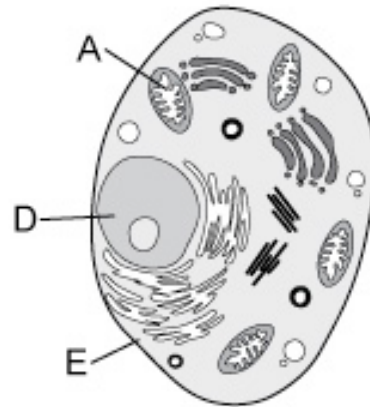
A paramecium is a unicellular organism that can move quickly through water. An elodea plant and a human being are multicellular organisms.

Compare and contrast a paramecium cell, an elodea leaf cell, and a human muscle cell. Be sure to include the following information in your description:

1. What cell structures and other characteristics are shared by all three cells?
2. What cell structures and other characteristics are unique to each cell? That is, in what ways is each cell different from the other two?



Plant Cell



Animal Cell

Part 2

Complete the table that compares plant and animal cells below. First, identify each organelle in the diagram and write the name of the organelle in the table; then, describe the organelle's function.

| Label | Name of organelle | Function of organelle |
|-------|-------------------|-----------------------|
| A | | |
| B | | |
| C | | |
| D | | |
| E | | |
| F | | |